

Susan Eley

Fine Art

SEFA is pleased to announce the forthcoming exhibition
Paintings by Rachelle Krieger & Anne Sherwood Pundyk
January 6-February 26, 2010

The exhibition, featuring large-scale landscapes by **Rachelle Krieger** and figurative paintings by **Anne Sherwood Pundyk**, opens with a **Gallery Reception on Wednesday, January 6, 6-8 pm.**

Much of **Rachelle Krieger's** recent series was painted and completed en plein air at Sands Point Preserve near her home in Port Washington, NY. At times, the weather was so inclement that she had to tie the canvases to the easel to prevent them from blowing away. Favoring loose, bold brushwork, Krieger captures the essence of a landscape through a reductive process that reveals the structural essence of trees, rocks and other natural elements in her surroundings. This method results in near abstractions of particular places. Krieger's rich palette, textured surfaces and raw, stormy brushwork evoke the paintings of Chaim Soutine, Amedeo Modigliani and abstract expressionist Willem de Kooning.

Anne Sherwood Pundyk's new body of paintings features large-scale female figures engaged in deliberate physical acts—shooting, crouching or riding. Sourced from various photographs, these women have been reborn as modern day cousins of their former selves. They rule the abstracted landscapes in which Pundyk sets them, yet retain a marvelous anonymity in their faceless, sometimes headless croppings. “This work allows me to pinpoint my ruminations and translate them with paint into a new cast of characters,” she says. Like Krieger, Pundyk approaches a canvas with an assertive and expressive stroke. Whereas Krieger builds up paint to draw out imagery, Pundyk deliberately leaves blank areas of the canvas, allowing a release valve for the heightened emotions the characters elicit.

Susan Eley

Fine Art

ABOUT THE ARTISTS

RACHELLE KRIEGER

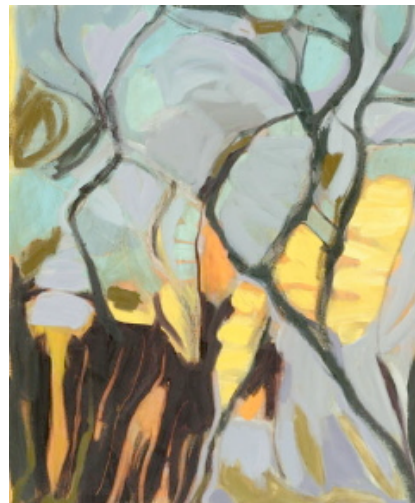
Rachelle Krieger received a BFA from Pratt Institute, 1989. She has also studied at the New York Studio School and the Art Students League in New York City. Krieger has recently been featured in exhibitions at Artsource International, NYC, Port Washington Public Library, Port Washington, NY, Judi Rotenberg Gallery, Boston, MA, and the Sedona Arts Center, Sedona, AZ. Her work is in the public and corporate collections of Hale & Dorr LLP, Boston, MA, Texas State Bank, Houston, TX, Quadel Consulting Corp., Washington DC, among others.

ANNE SHERWOOD PUNDYK

Anne Sherwood Pundyk was born in New York City, where she currently resides. She received a BA from Pomona College, CA, and an MFA from RISD in 1982. Recently, Pundyk has exhibited her paintings at Washington and Lee University, Lexington, VA, Nichols Gallery, Barboursville, VA, Forrest Scott Gallery, Millburn, NJ, DFN Gallery, NY and in SEFA's recent group show *Heading Home*. She has lectured at Manhattan Marymount College, at Fordham University and maintains a dynamic dialogue about contemporary art through her blog www.annesherwoodpundyk.blogspot.com.



Pundyk, *Sharpshooter* (2009)
oil and acrylic on linen, 63x60"



Krieger, *Winter Approaching* (2007)
oil on linen, 34x28"